

25398 I

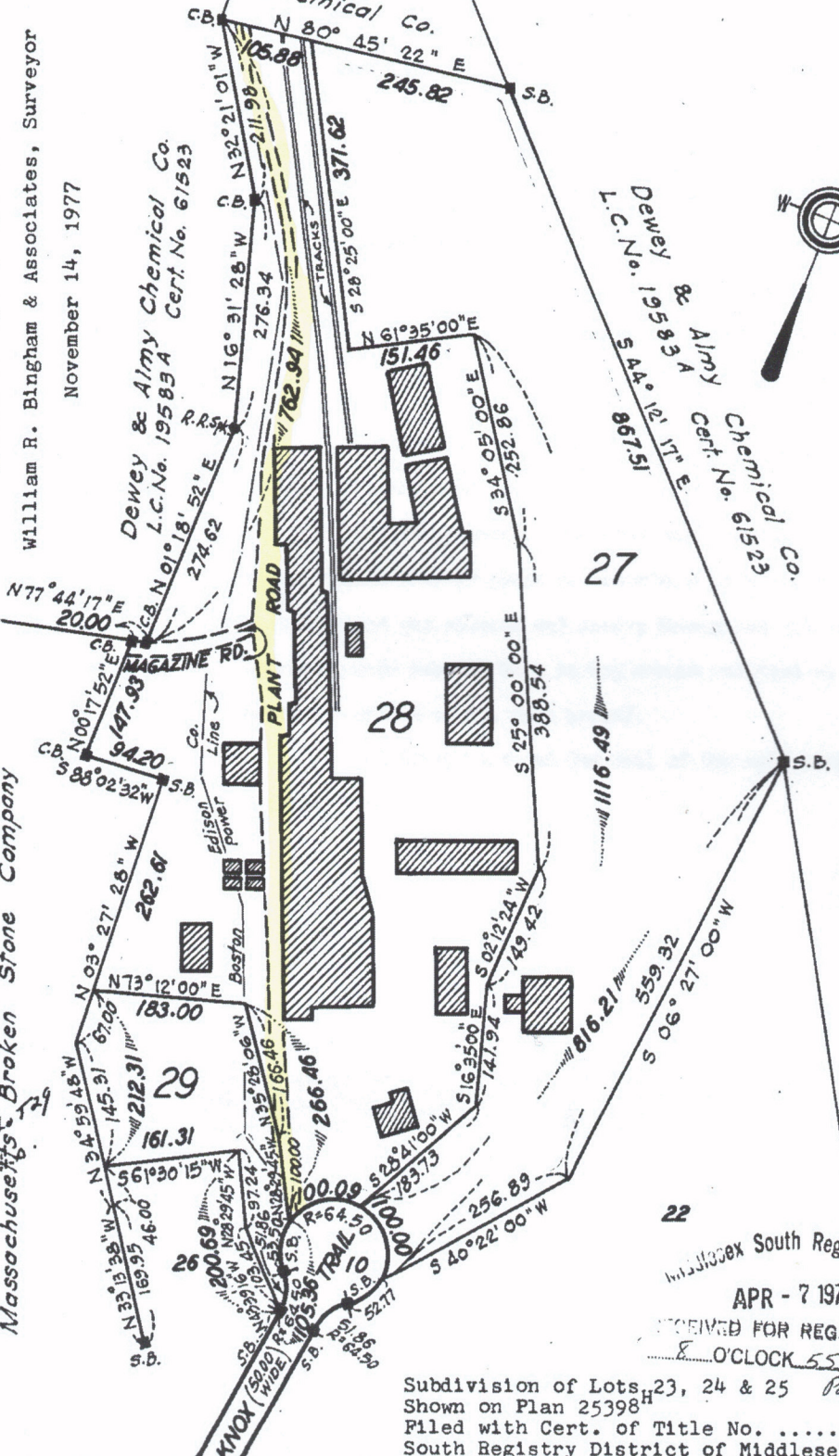
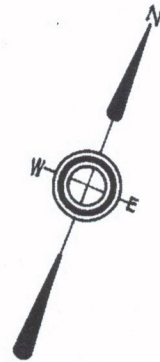
of Lot 27
in Book 957 Page 172

SUBDIVISION PLAN OF LAND IN ACTON
William R. Bingham & Associates, Surveyor
November 14, 1977

Dewey & Almy Chemical Co.
L.C.No. 19583 A Cert. No. 61523

Dewey & Almy Chemical Co.
N 80° 45' 22" E

Dewey & Almy Chemical Co.
L.C.No. 19583 A
S 44° 12' 17" E
667.51



10/26/88-2011
25398-2011
11/19/88-2011
Affecting
Leather Rd.

Massachusetts Broken Stone Company

Middlesex South Registry District
APR - 7 1977
RECEIVED FOR REGISTRATION
8 O'CLOCK 55 M. A. M.

Subdivision of Lots 23, 24 & 25 Pt. 5.00
Shown on Plan 25398
Filed with Cert. of Title No.
South Registry District of Middlesex County

Separate certificates of title may be issued for land shown hereon as lots 27, 28 and 29 By the Court.

James M. Maloney
Deputy Recorder

Copy of part of plan filed in
LAND REGISTRATION OFFICE
DEC. 8, 1977
Scale of this plan 150 feet to an inch
R.L. Woodbury, Engineer for Court