

# Sudbury, Assabet & Concord Rivers



OARS Staff Scientist, Sue Flint  
Presentation to Green Acton  
June 10, 2018







Science  
Advocacy  
Stewardship



Working to protect and preserve, the Assabet, Sudbury and Concord Rivers, their tributaries and watershed for wildlife and recreation since 1986

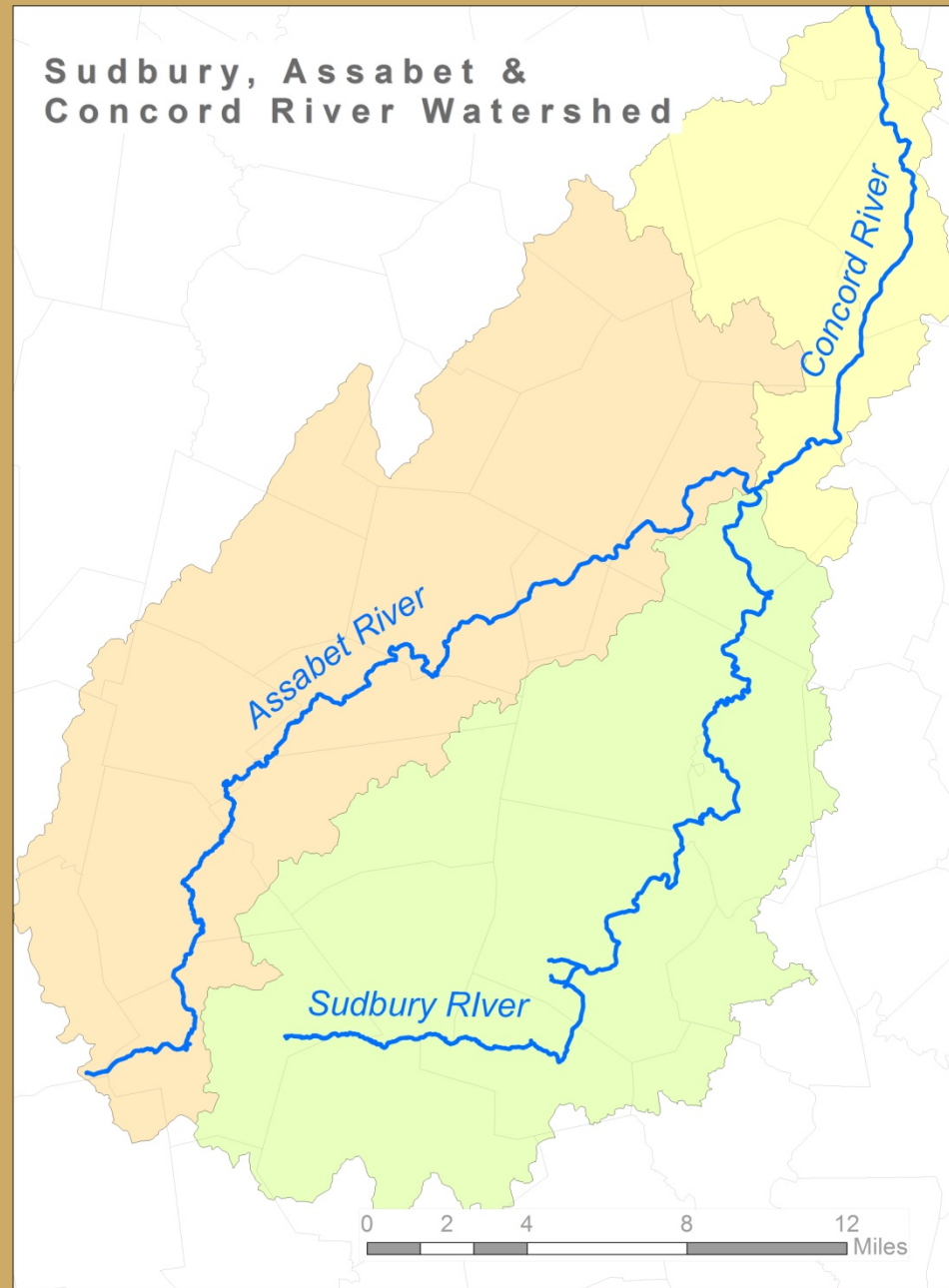
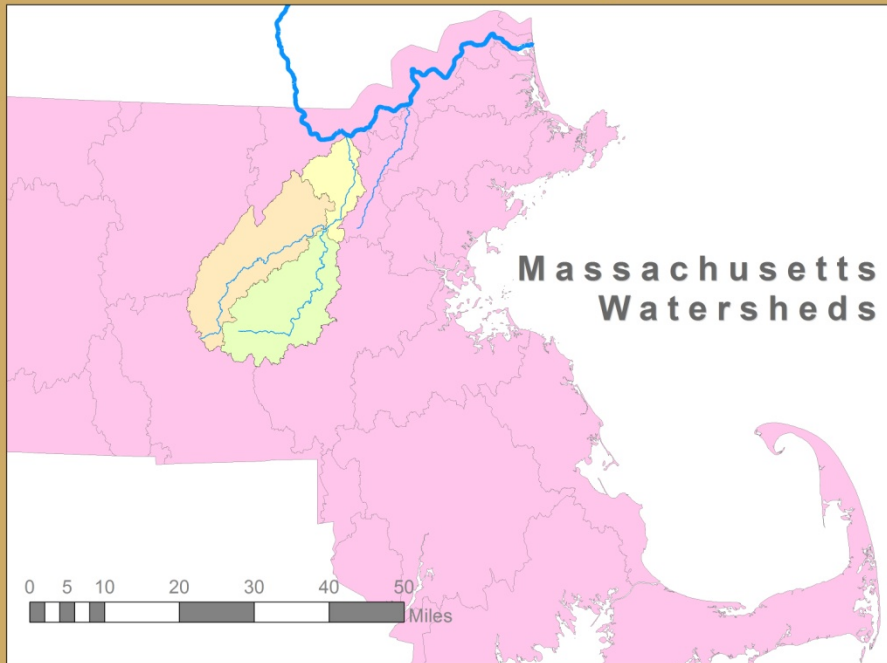
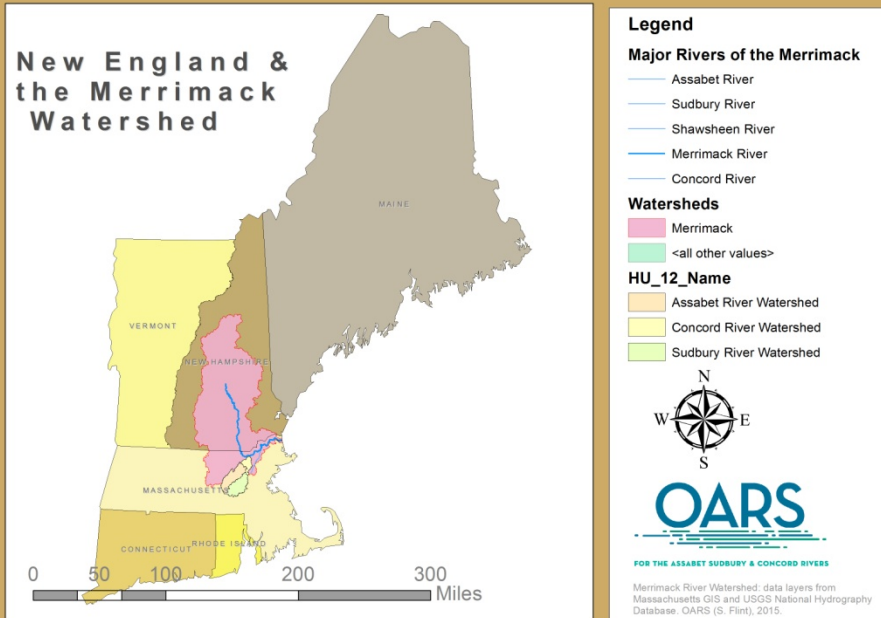


# Agenda



- Location
  - Watershed
  - Acton's streams
- Habitat and Water Quality Issues and OARS' work
  - Assabet
  - Sudbury
  - Concord
  - Tributaries

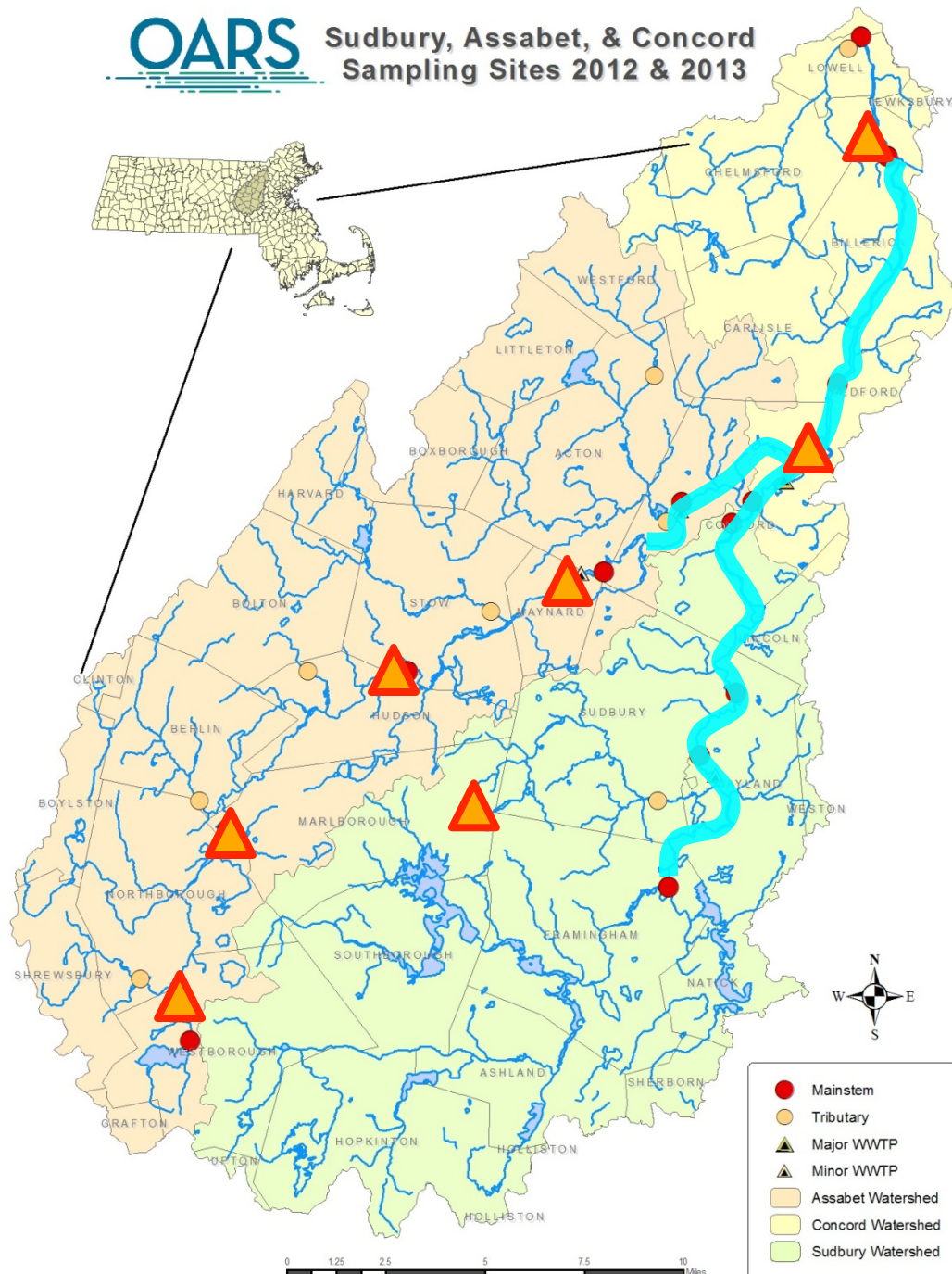
# Merrimack River Watershed







## Sudbury, Assabet, & Concord Sampling Sites 2012 & 2013



- Major Wastewater Treatment Plants with surface water discharges:
  - 4 Assabet
  - 2 Concord
  - 1 Hop Brook (trib to Sudbury River)
- Dams:
  - 9 on Assabet
  - 3 on Concord
  - 7 on Sudbury
- Wild & Scenic designation
- Great Meadow National Wildlife Refuge



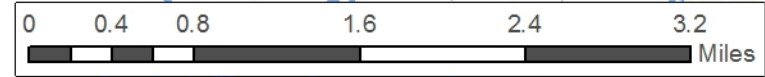
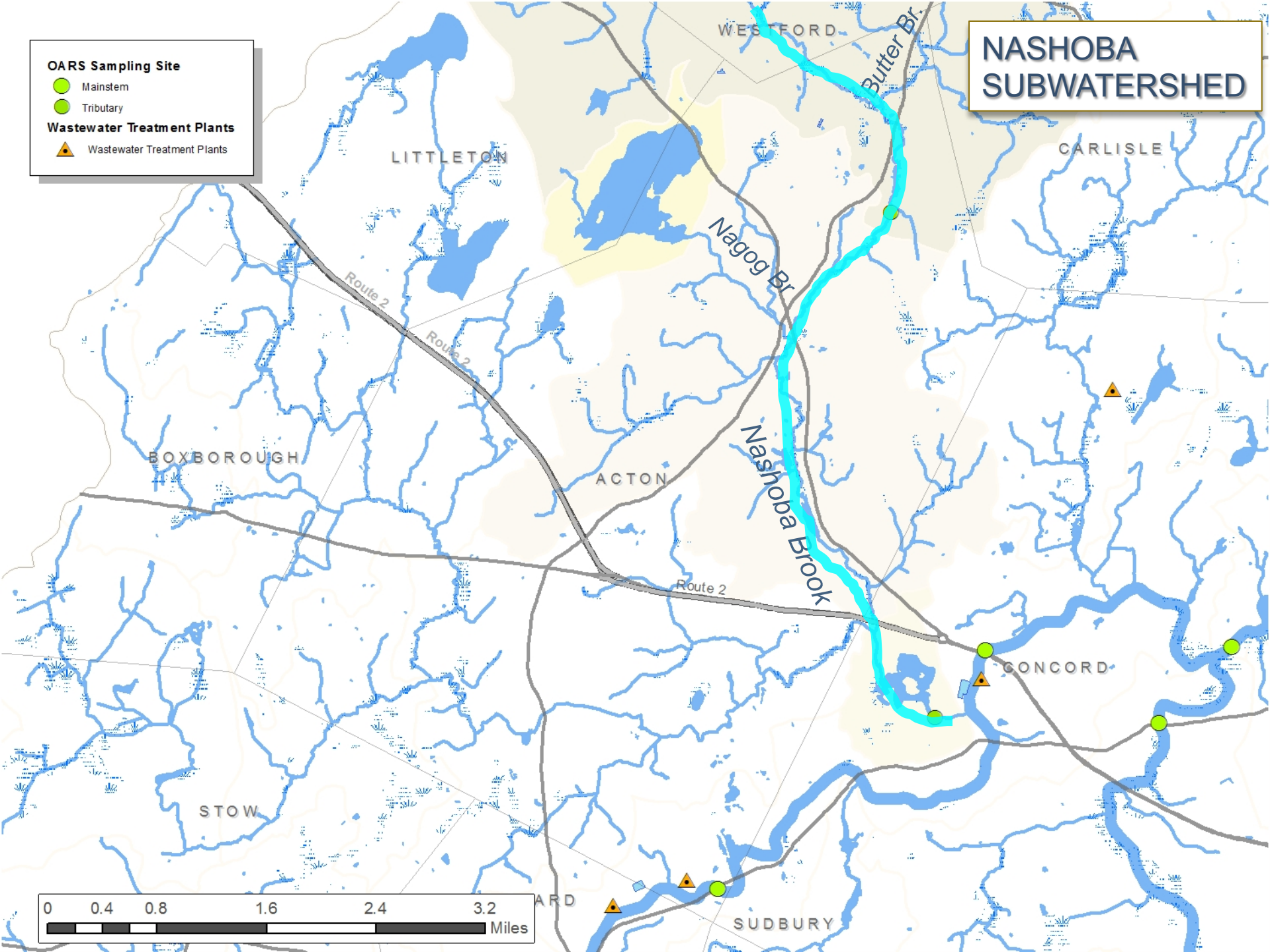
# NASHOBA SUBWATERSHED

**OARS Sampling Site**

- Mainstem
- Tributary

**Wastewater Treatment Plants**

- Wastewater Treatment Plants





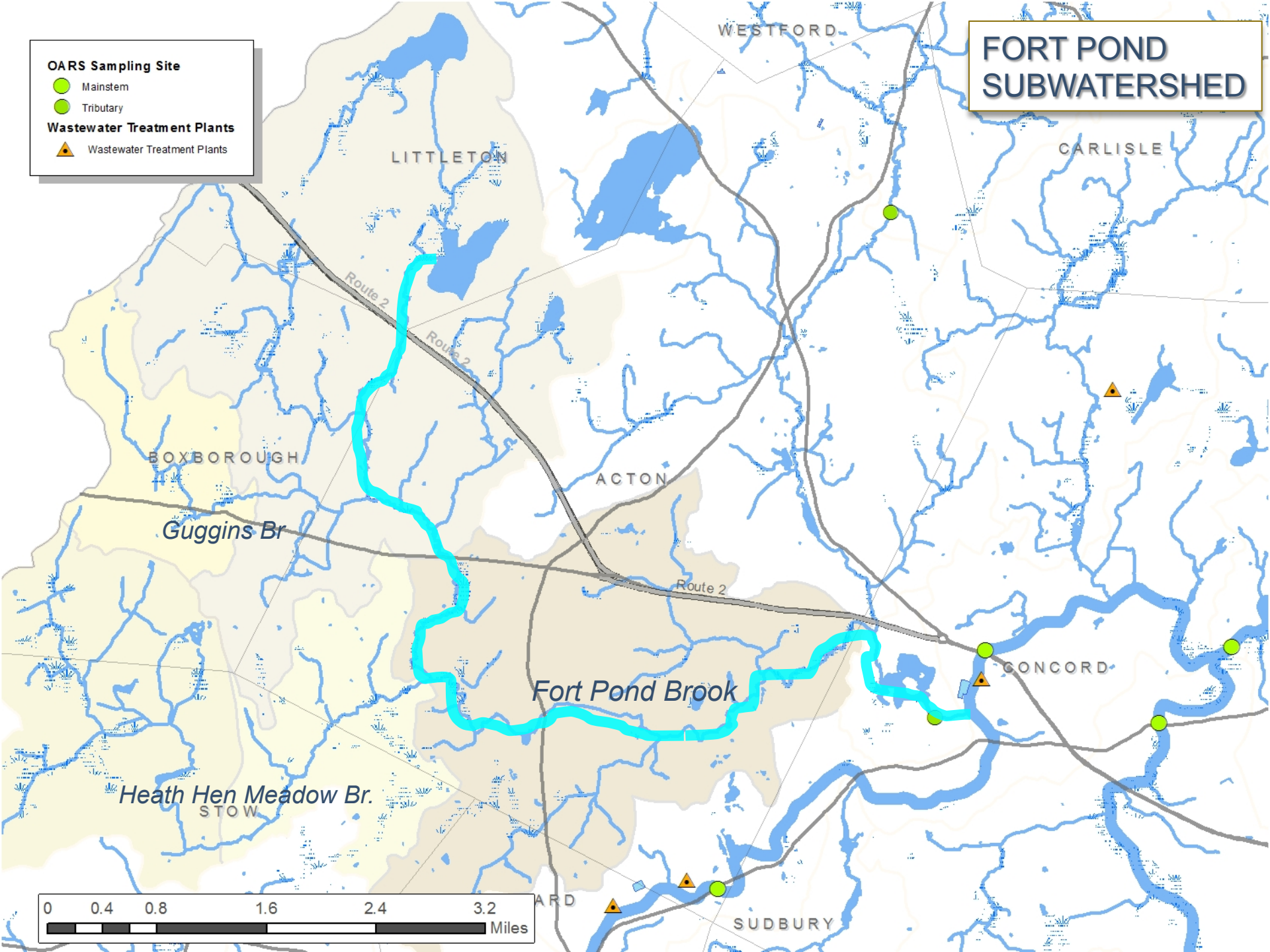
# FORT POND SUBWATERSHED

**OARS Sampling Site**

- Mainstem
- Tributary

**Wastewater Treatment Plants**

- Wastewater Treatment Plants





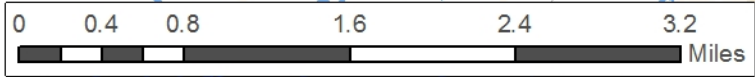
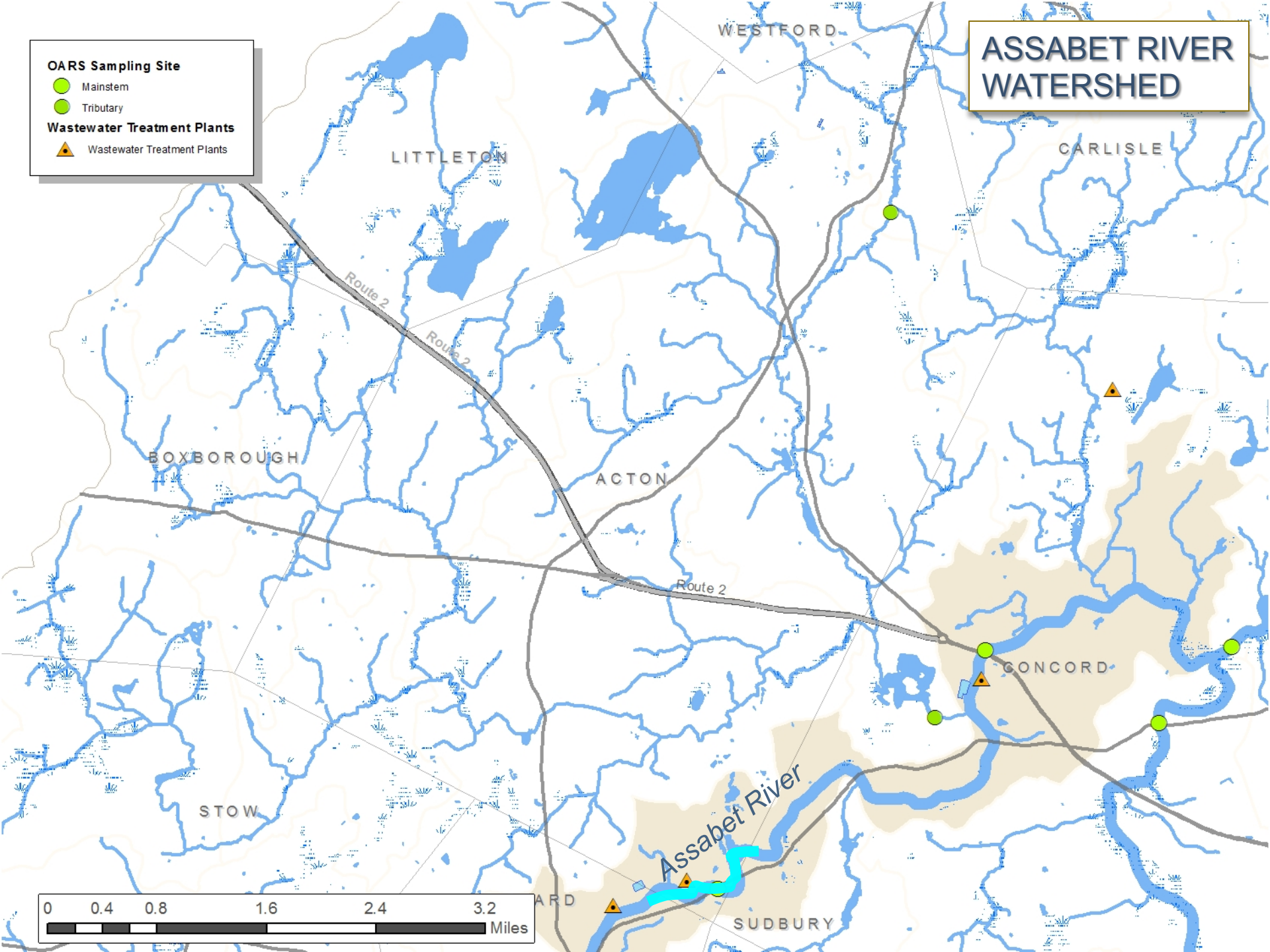
# ASSABET RIVER WATERSHED

**OARS Sampling Site**

- Mainstem
- Tributary

**Wastewater Treatment Plants**

- Wastewater Treatment Plants



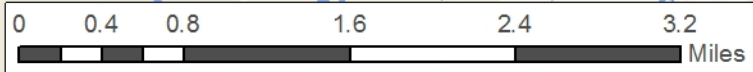
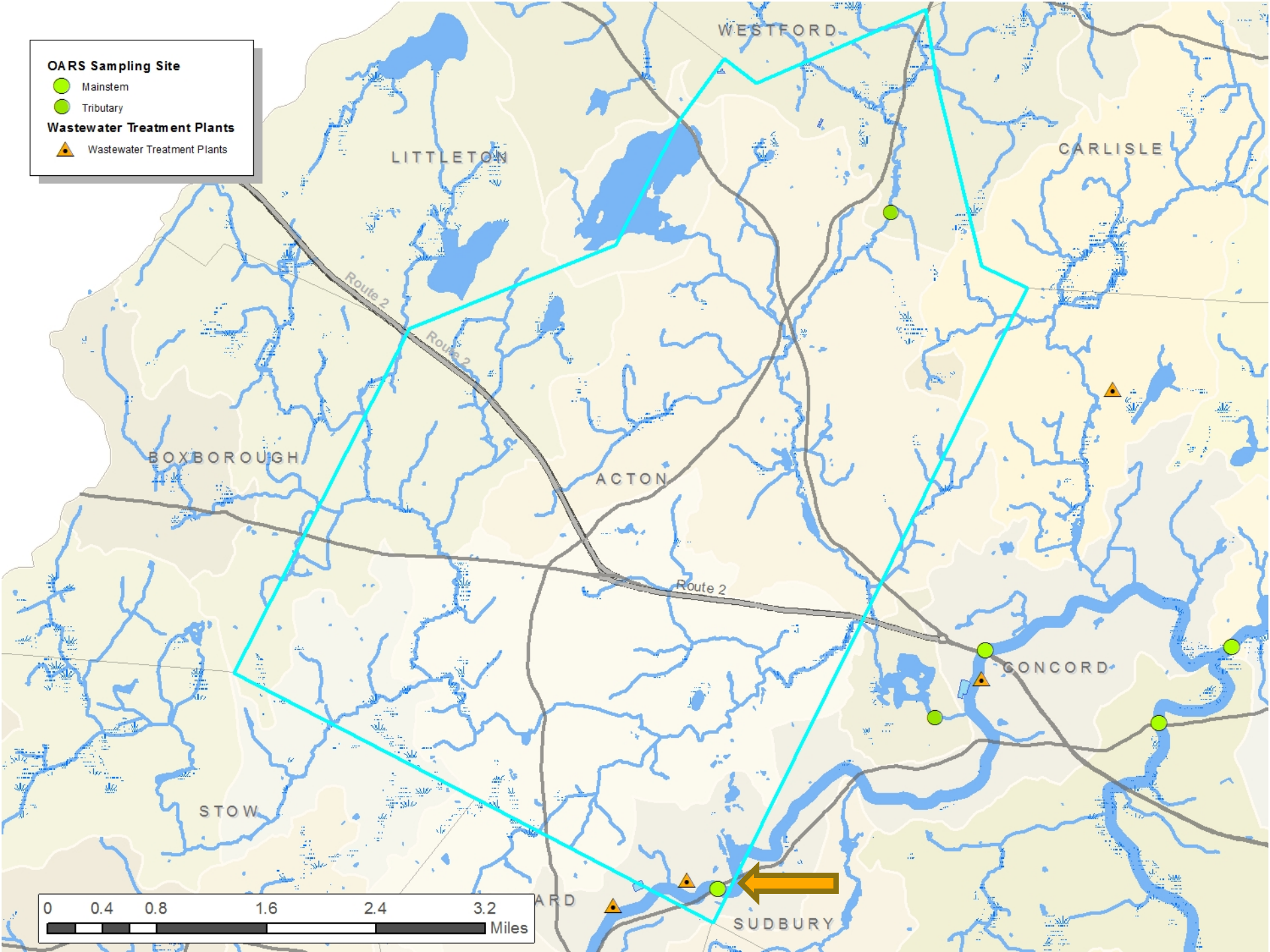


**OARS Sampling Site**

- Mainstem
- Tributary

**Wastewater Treatment Plants**

- Wastewater Treatment Plants





# Assabet River Blue & Green Trail



Acton Natural Resources Department  
 NR@acton-ma.gov  
 978-929-6634

OARS: for the Assabet, Sudbury, and Concord Rivers  
[www.oars3rivers.org](http://www.oars3rivers.org)



Base data from MassGIS and USGS  
 GIS software from Esri Conservation



# Water Quality / Habitat Concerns

- Assabet
  - Wastewater
  - Eutrophication
- Sudbury
  - Mercury
  - Invasive species
- Concord
  - Invasives
  - Dams
- Tributaries
  - Climate Change
  - Connectivity

