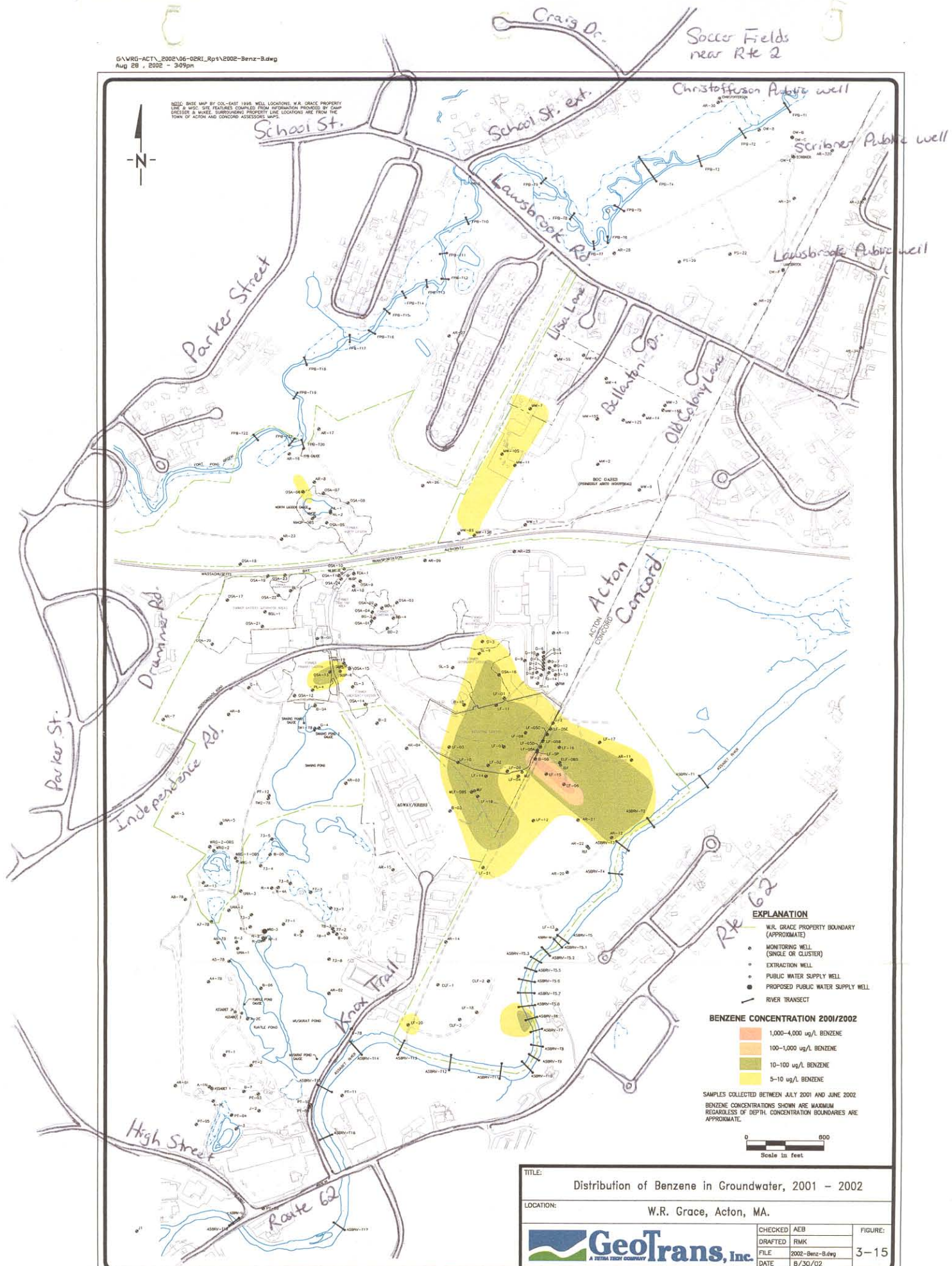


NOTE: BASE MAP BY COL-EAST 1998. WELL LOCATIONS, W.R. GRACE PROPERTY LINE & W.R.G. SITE FEATURES COMPILED FROM INFORMATION PROVIDED BY CAMP ELLIOTT & ASSOC. SURROUNDING PROPERTY LINE LOCATIONS ARE FROM THE TOWN OF ACTON AND CONCORD ASSESSORS MAPS.



EXPLANATION

- W.R. GRACE PROPERTY BOUNDARY (APPROXIMATE)
- MONITORING WELL (SINGLE OR CLUSTER)
- EXTRACTION WELL
- PUBLIC WATER SUPPLY WELL
- PROPOSED PUBLIC WATER SUPPLY WELL
- RIVER TRANSECT

BENZENE CONCENTRATION 2001/2002

- 1,000-4,000 ug/L BENZENE
- 100-1,000 ug/L BENZENE
- 10-100 ug/L BENZENE
- 5-10 ug/L BENZENE

SAMPLES COLLECTED BETWEEN JULY 2001 AND JUNE 2002
 BENZENE CONCENTRATIONS SHOWN ARE MAXIMUM REGARDLESS OF DEPTH. CONCENTRATION BOUNDARIES ARE APPROXIMATE.



TITLE: Distribution of Benzene in Groundwater, 2001 - 2002			
LOCATION: W.R. Grace, Acton, MA.			
		CHECKED: AEB	FIGURE: 3-15
		DRAFTED: RMK	
		FILE: 2002-Benz-B.dwg	
		DATE: 8/30/02	

Map 9: Benzene distribution, from August 2002 RI Report; local streets added