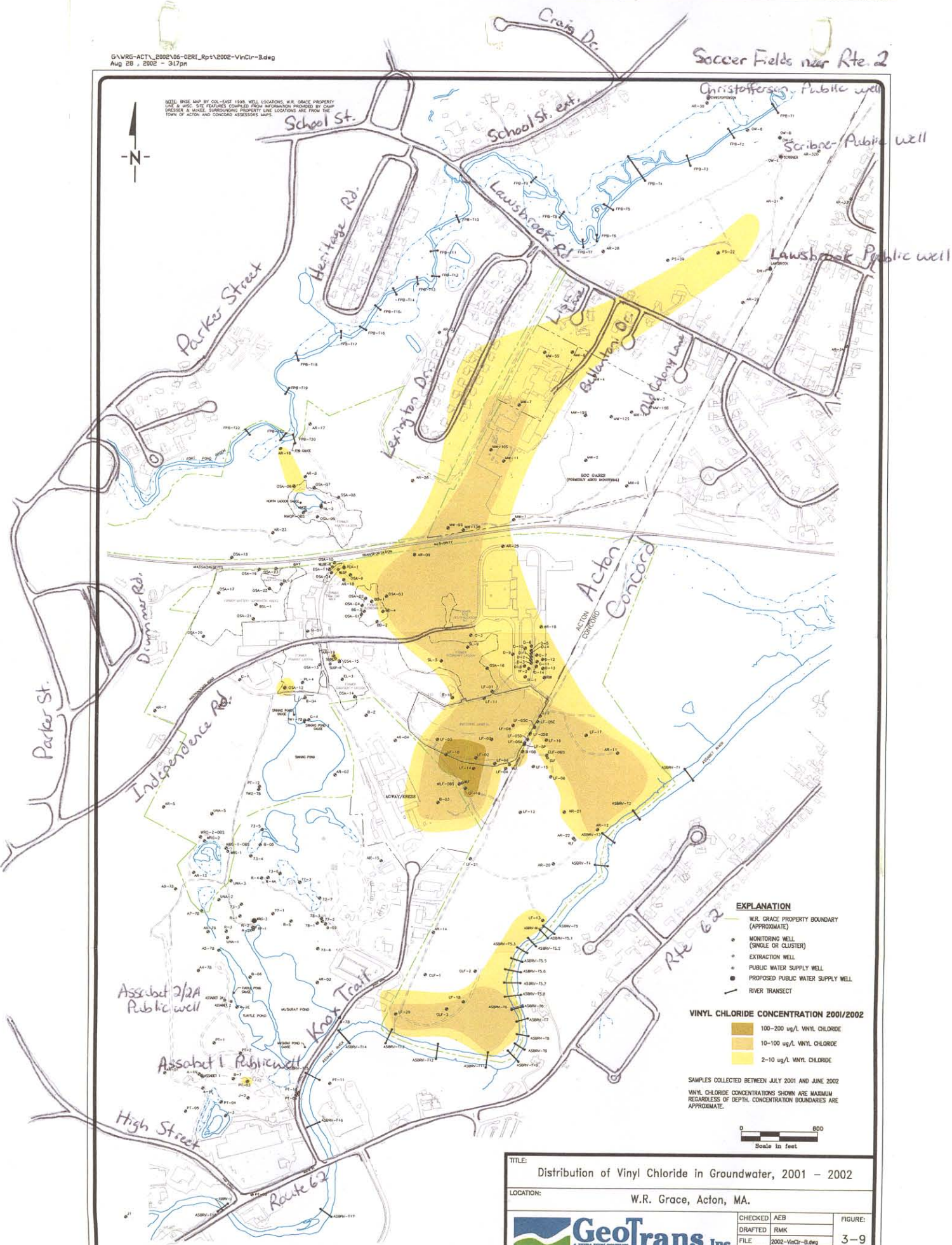


NOTE: BASE MAP BY COL-EAST 1998. WELL LOCATIONS, W.R. GRACE PROPERTY LINE & MONITORING POINTS DERIVED FROM INFORMATION PROVIDED BY CAMP SAKENEN & WALKER. SURROUNDING PROPERTY LINE LOCATIONS ARE FROM THE TOWN OF ACTON AND CONCORD ASSESSORS MAPS.



EXPLANATION

- W.R. GRACE PROPERTY BOUNDARY (APPROXIMATE)
- MONITORING WELL (SINGLE OR CLUSTER)
- EXTRACTION WELL
- PUBLIC WATER SUPPLY WELL
- PROPOSED PUBLIC WATER SUPPLY WELL
- RIVER TRANSECT

VINYL CHLORIDE CONCENTRATION 2001/2002

- 100-200 ug/L VINYL CHLORIDE
- 10-100 ug/L VINYL CHLORIDE
- 2-10 ug/L VINYL CHLORIDE

SAMPLES COLLECTED BETWEEN JULY 2001 AND JUNE 2002
 VINYL CHLORIDE CONCENTRATIONS SHOWN ARE MAXIMUM REGARDLESS OF DEPTH. CONCENTRATION BOUNDARIES ARE APPROXIMATE.



TITLE: Distribution of Vinyl Chloride in Groundwater, 2001 - 2002			
LOCATION: W.R. Grace, Acton, MA.			
		CHECKED: AEB DRAFTED: RMK FILE: 2002-VinClr-B.dwg DATE: 8/30/02	FIGURE: 3-9

Map 8: Vinyl Chloride distribution, from August 2002 RI Report; local streets added